

LED Illuminated Pushbutton for Panel Mounting

Series 8018

PanSiG



www.stahl.de



04786E00

- > For panel mounting
- > With integrated LED
 - High luminance
 - Low heat built-up
 - Prolonged service life
- > Spring-return version
- > 2 contact elements
 - NC / NO
 - NC / NC
 - NO / NO
- > Colour filters red, yellow, green, blue and white are included in the delivery
- > With connecting cable



E4

The LED illuminated pushbuttons Series 8018 are explosion protected electric devices suitable for the installation in enclosure walls and covers of electric devices, switch panels and control desks. They are used to switch load, control and signal circuits and signal command modes by lighting up or going out. The devices consist of a main part with two flameproof encapsulated contacts, an LED indicating lamp unit and a front element for operation. The LED illuminated pushbutton in combination with the actuator attachment Series 8602 is designed for D 30 single hole installation according to EN 50007.

	ATEX / IECEx						Zone	Class I (NEC 505) (NEC 506)						Division	Class I		Class II		Class III	
	0	1	2	20	21	22		0	1	2	20	21	22		1	2	1	2	1	2
For use		x	x		x	x	For use in			x					x					

WebCode 8018A

LED Illuminated Pushbutton for Panel Mounting

Series 8018



Selection Table

Version	Description	Order number	Weight kg
 LED illuminated pushbutton Series 8018	with flexible lead 6 m		
	Contacts 1 NC + 1 NO	8018/3113-al-6	0.740
	Contacts 2 NC	8018/3123-al-6	0.740
	Contacts 2 NO	8018/3133-al-6	0.740
Note	The colour filters red, yellow, green, blue, white are enclosed in the delivery. Gold contacts on request		

Explosion Protection

Marking

IECEX

Gas explosion protection

Ex e 8018/31. Ex dm IIC T6

Ex i 8018/32. Ex dm ia IIC T6

Dust explosion protection

Ex tD A21 IP65 T80°C

Europe (ATEX)

Gas explosion protection

⊕ II 2 G Ex d mb IIC T6

Dust explosion protection

⊕ II 2 D Ex tD A21 IP65 T80°C

Certificates

IECEX

IECEX PTB 07.0011X

Europe (ATEX)

PTB 02 ATEX 2129 X

Other certificates

India (PESO), Canada (CSA), Kazakhstan (JSC), Russia (CTB), USA (UL), Belarus (Gospromnadzor)

Technical Data

Electrical data

Rated operational voltage

Contact

max. 270 V

Indicating lamp unit

12 (- 10 %) ... 254 (+ 6 %) V, AC / DC

Rated operational current

Contact

max. 6 A

Indicating lamp unit

0.014 A at 24 V DC

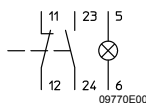
Frequency

0 ... 60 Hz

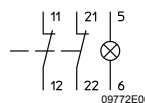
Rated operational power

0.6 W

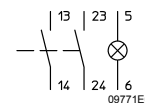
Circuit diagram



8018/3113



8018/3123



8018/3133

Switching capacity

Service category

AC-15

AC-12

DC-13

270 V

270 V

110 V

max. 6 A

max. 6 A

max. 1 A

max. 1250 VA

max. 3000 VA

max. 110 W

Rated operating characteristics referring to service category

Min. voltage*

12 V AC / DC

Min. current*

50 mA

* reference values dependent on conditions of use

Min. voltage*

12 V AC / DC

Min. current*

50 mA

* Reference values dependent on conditions of use

Ambient conditions

Ambient temperature

- 30 ... + 60 °C

Mechanical data

Degree of protection

IP65 (front-side IP66)
acc. to IEC/EN 60529

LED Illuminated Pushbutton for Panel Mounting

Series 8018




PanSiG



Technical Data

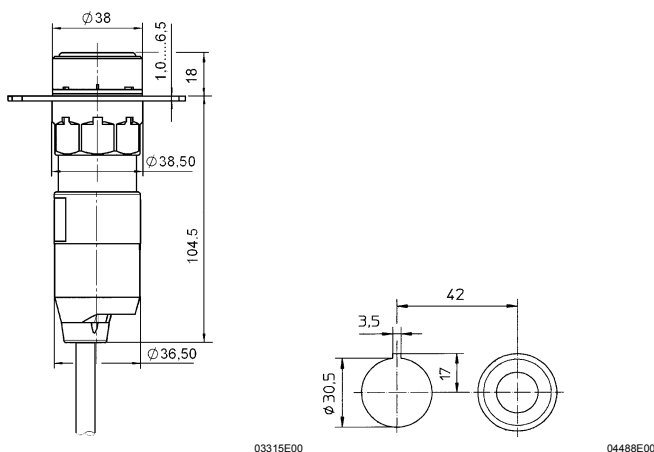
Material	
Enclosure	Polyamide
Colour filter	Polyamide
Contact material	
Standard	Silver-nickel
Special	Silver-nickel, gold-plated
Service life	
Contact	10 ⁶ operations
Indicating lamp unit	10 ⁵ operating hours
Indicating lamp	
Lamps	LED white
Colours	red, yellow, green, blue, white via colour filter (included in the delivery)
Mounting / Installation	
Connection	Cable H05 6 x 0.75 mm ² , 6 poles
Cable length	3 , 6 , 15 m (others lengths on request)

Accessories and Spare Parts

Designation	Illustration	Description	Art. no.	Weight kg
Actuator insert	 05044E00	for illuminated pushbuttons (spring-return)	155163	0.019
Colour filter	 05358E00	for illuminated pushbuttons		
		white	155877	0.001
		red	155882	0.001
		yellow	155885	0.001
		green	155888	0.001
blue	155891	0.001		
Closing part	 05647E00	for closing off unused holes in cover \varnothing 30.5 mm	155329	0.016

E4

Dimensional Drawings (All Dimensions in mm) - Subject to Alterations



**LED illuminated pushbutton
Series 8018**

Drilling pattern:
for aligning several devices diameter 38 mm, in a panel

We reserve the right to make alterations to the technical data, dimensions, weights, designs and products available without notice. The illustrations cannot be considered binding.