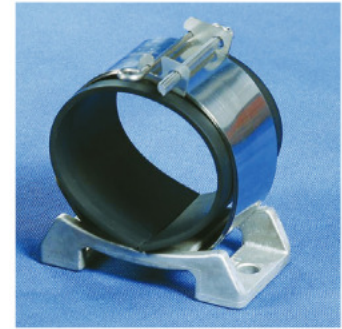


# CABLE CLEATS

## ● DSCC TYPE(CABLE CLEAT)

The Strap Material : Stainless Steel 316 or 316L  
 The fixture base material : Stainless Steel, Zinc(Nickel Plated), Aluminum  
 Two fixing hole designed  
 Exceptional overlapping ranges.  
 Operating Temperature : -60 to 100  
 DSCC(Cable Cleat) maybe used to anchor three cables  
 in trefoil formation, single cables or bundles of cables to support.



## ● DSCS TYPE(CABLE STRAP)

Cable Strap is consists of tensioning clip, securing pin and winding key made out of highly corrosion resistant, non-magnetic stainless steel.  
 It maybe used to bind cables together in a group or act as an intermediate between Cable cleats.  
 Heavy duty designed to have 3 loops (RMS 51.6 kA) or 4 loops (RMS 75.0 kA) around the cables.



## ● ORDER INFORMATION

1. Cable Cleat (included Fixture Base)

DSCC-0000

\_\_\_\_\_ Cable Strap Length

2. Cable Strap (without Fixture Base)

DSCS-0000

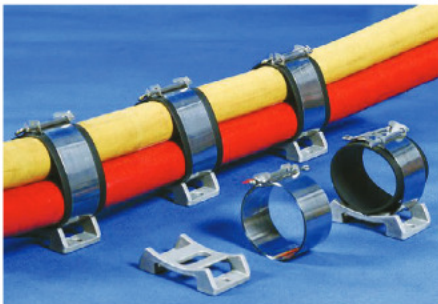
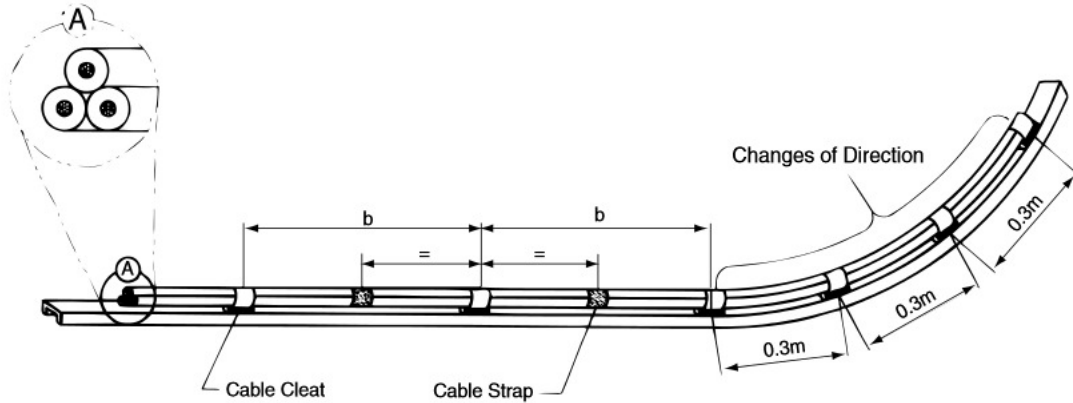
\_\_\_\_\_ Cable Strap Length

## ● CABLE OVERALL DIAMETER

Trefoil Foam				Single Foam				Trefoil foam without fixture base		
Cable O.D a	Cable Strap Length			Cable O.D A	Cable Strap Length			Cable O.D a	Cable Strap Length	
	Standard duty	Heavy duty	B		Standard duty	Heavy duty	B		Standard duty	Heavy duty
24	810	985	75	36	610	755	65	24	690	835
30	960	1165	86	60	910	1135	90	30	840	1025
34	1050	1295	95	80	1180	1465	110	34	940	1145
37	1120	1385	100	85	1260	1565	115	37	1010	1235
41	1270	1555	108	90	1370	1695	120	41	1160	1415
43	1320	1615	112	105	1560	1925	135	43	1210	1475
47	1420	1745	120	110	1630	2000	140	47	1300	1595
50	1490	1835	126					50	1380	1685
56	1640	2015	138					56	1530	1875
60	1780	2185	145					60	1680	2045
63	1860	2275	152					63	1750	2135
67	1960	2405	161					67	1850	2255
69	2010	2465	165					69	1900	2325
73	2150	2635	173					73	2040	2495
80	2330	2845	187					80	2210	2705
110	3070	3775	245					110	2950	3635

# CABLE CLEATS

## ● Spacing Recommendations for Cables in Trefoil



### Short Circuit Test :

RMS	Peak	Duty	"b" Max
51.0kA	130kA	Heavy	1.2M
75.0kA	170kA	Heavy	0.6M

### Important Note :

To ensure adequate restraint, Cable Strap (DSCS type) must be used at the mid-point between cleats(DSCC type) on all horizontal and vertical straight runs.

## ● INSTALL SEQUENCE

<p>Fasten base to support with M10 fixings. Loop band through and around cables.</p>	<p>Pull Slack into outer loop. Insert split pin in clip from right hand side around outer layer of band 10mm from end of strap.</p>	<p>To tension strap rotate the pin clockwise. Swing Key over hand and engage in glote of the clip.</p>

## ● INSTALLATION TOOL

### DAS-550



### DAPN-500(pneumatic/air Tool)



### DABA-650(Battery Automatic)

