

Stopping Plugs made of Moulded Material

Series 8290

STAHL



- Plastic stopping plugs for sealing open holes
- For thread sizes M16 to M63
- For Ex e enclosures

E10

WebCode 8290A



R. STAHL's 8290 series plastic stopping plugs can be used to seal unused holes in Ex e enclosures ("increased safety" type of protection). To ensure that they remain robust during use, they are designed to be impact resistant in accordance with IEC/EN 60079-0 and IEC/EN 60079-7 and are protected against working loose.

	ATEX / IECEx					
Zone	0	1	2	20	21	22
Installation in		•	•		•	•

Selection Table							
Drive	Hexagon socket						
Thread size	Thread length	Width across flats	Width across corners	Width across flats hexagon socket	Packaging unit	Art. No.	Weight kg
M16	11 mm	20 mm	22 mm	8 mm	100	143556	0.300
M20	11 mm	24 mm	26 mm	10 mm	100	143543 ▲	0.500
M25	10.5 mm	29 mm	31 mm	10 mm	100	143544 ▲	0.700
M32	11.2 mm	36 mm	38 mm	10 mm	50	143562 ▲	0.600
M40	14 mm	46 mm	53 mm	10 mm	30	143557 ▲	0.480
M50	14 mm	55 mm	61 mm	10 mm	30	143558 ▲	0.780
M63	14 mm	68 mm	75 mm	10 mm	30	143559	1.680

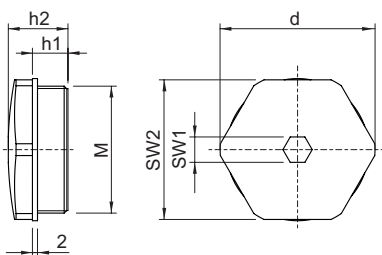
Technical Data	
Explosion Protection	
IECEx gas explosion protection	Ex eb IIC Gb
IECEx dust explosion protection	Ex tb IIIC Db
ATEX gas explosion protection	Ⓔ II 2 G Ex eb IIC Gb
ATEX dust explosion protection	Ⓔ II 2 D Ex tb IIIC Db
EAC gas explosion protection	Ⓔ 1 Ex e II Gb U
EAC dust explosion protection	Ⓔ Ex tb IIIC Db U
Certificates	ATEX (PTB), Brazil (ULB), EAC (LPE), IECEx (PTB), Korea (KGS)
Ambient Conditions	
Ambient temperature	-60 °C ... +80 °C
Mechanical Data	
Degree of protection (IP)	IP66

Technical Data

Mechanical Data

Degree of protection note	acc. to IEC/EN 60529
Silicone-free	Yes
Self-extinguishing	Yes
Flame retardant	Yes
Material	Polyamide, Glass fibre reinforced
Material sealing ring	EPDM

Dimensional Drawings (All Dimensions in mm [inches]) – Subject to Alterations



M = Thread size d = Width across corners
h1 = Thread length h2 = Dimension h2
SW1 = Width across flats hexagon socket
SW2 = Width across flats